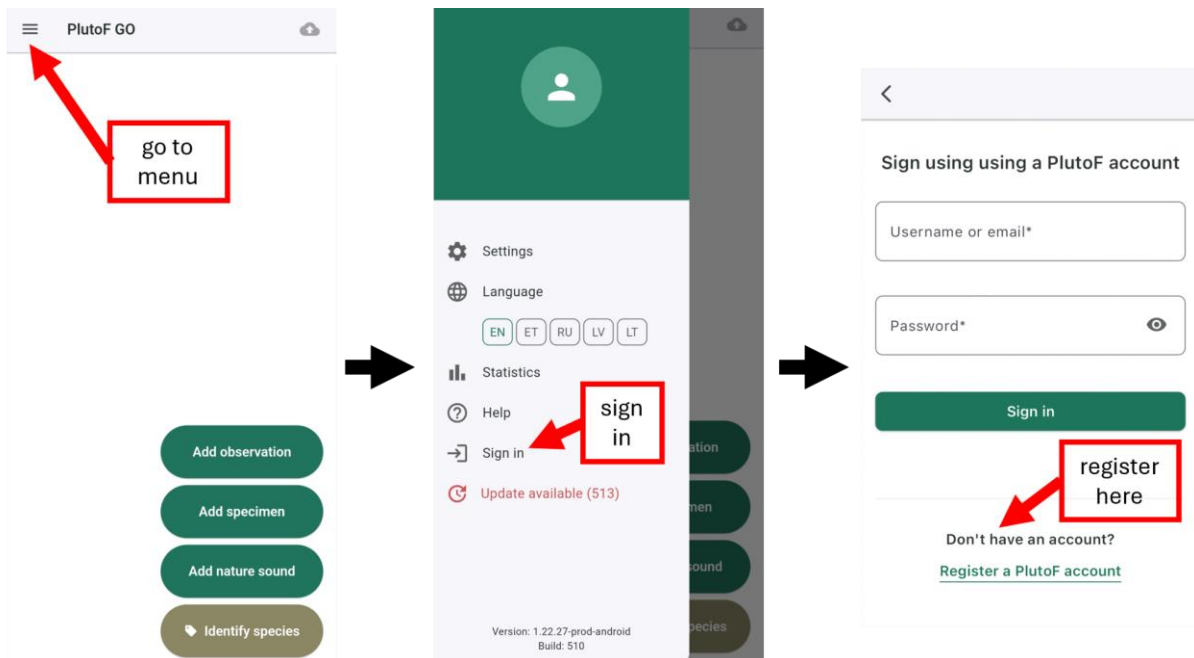


How to join the project using PlutoF Go?

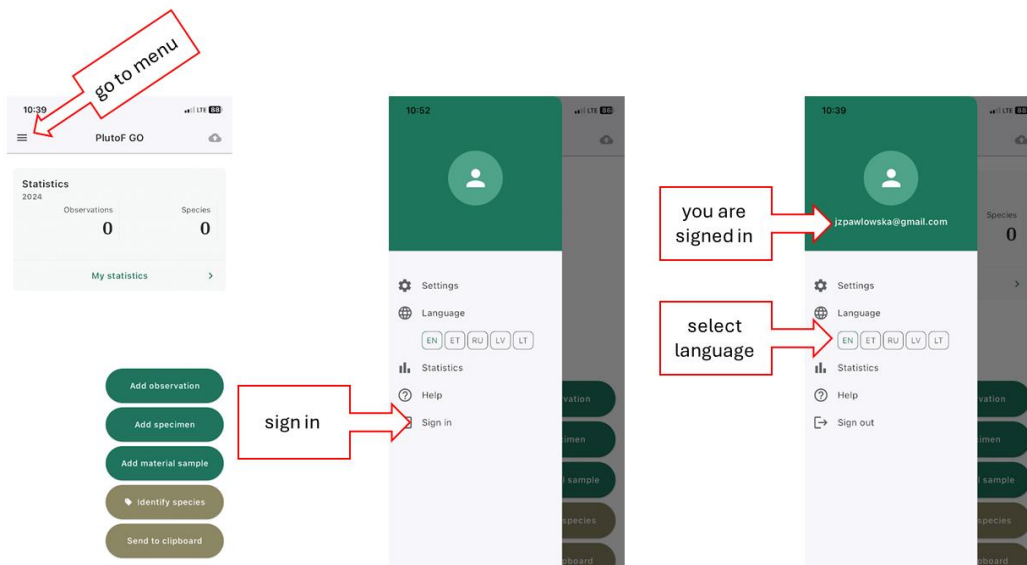
1. Download PlutoF GO app:
 - a. [PlutoF GO - Apps on Google Play](#)
 - b. [PlutoF GO on the App Store](#)



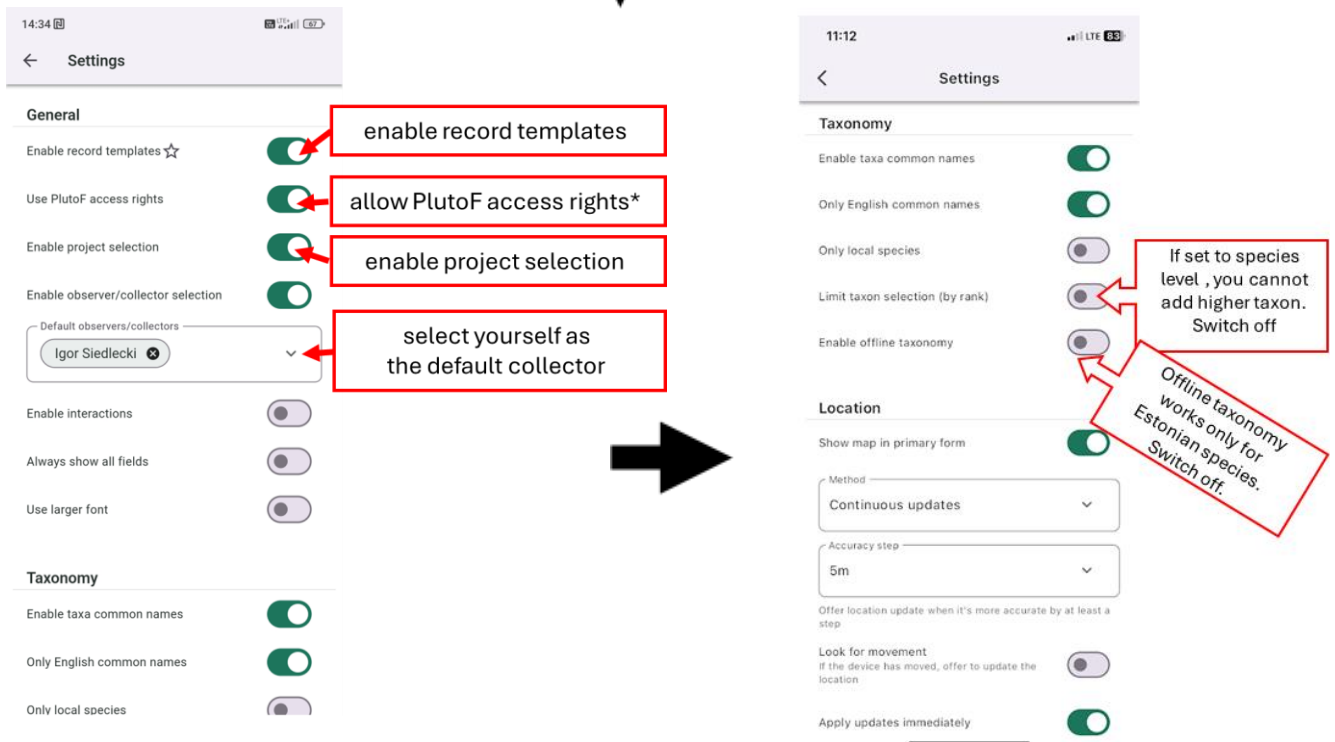
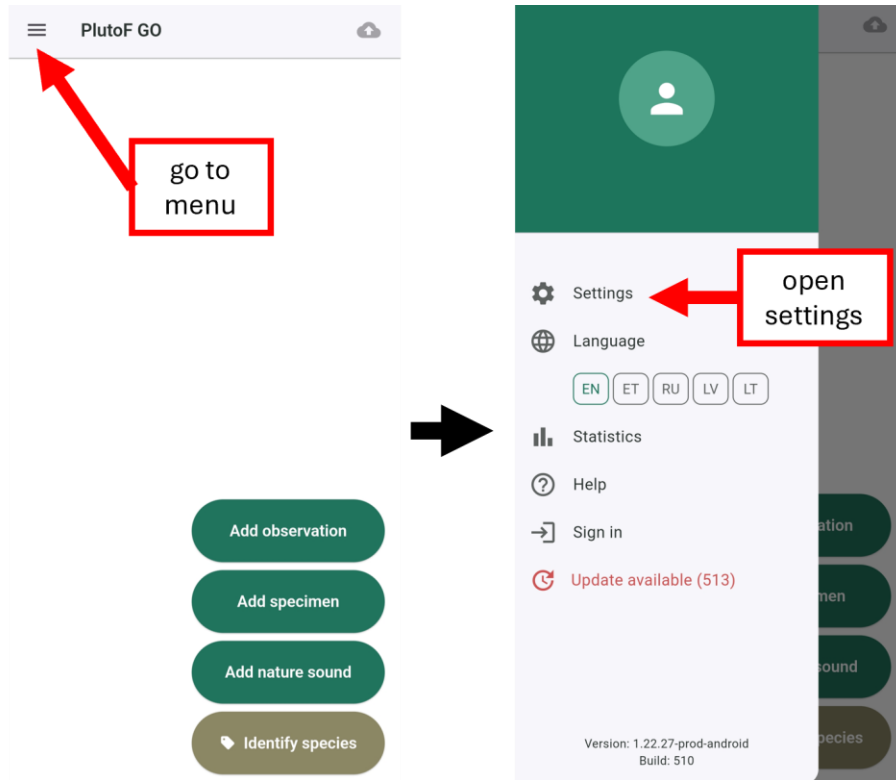
2. Register directly in the PlutoF GO app and follow further instructions displayed in the app to do so. You can also create your user account at PlutoF workbench [PlutoF](#). In this workbench you will always be able to manage your account and records.

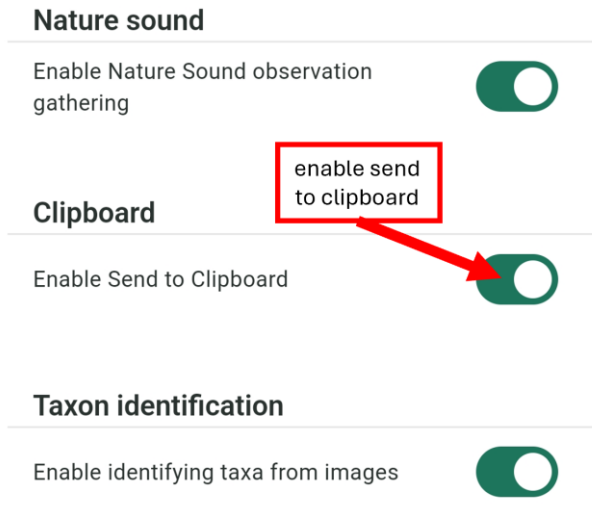
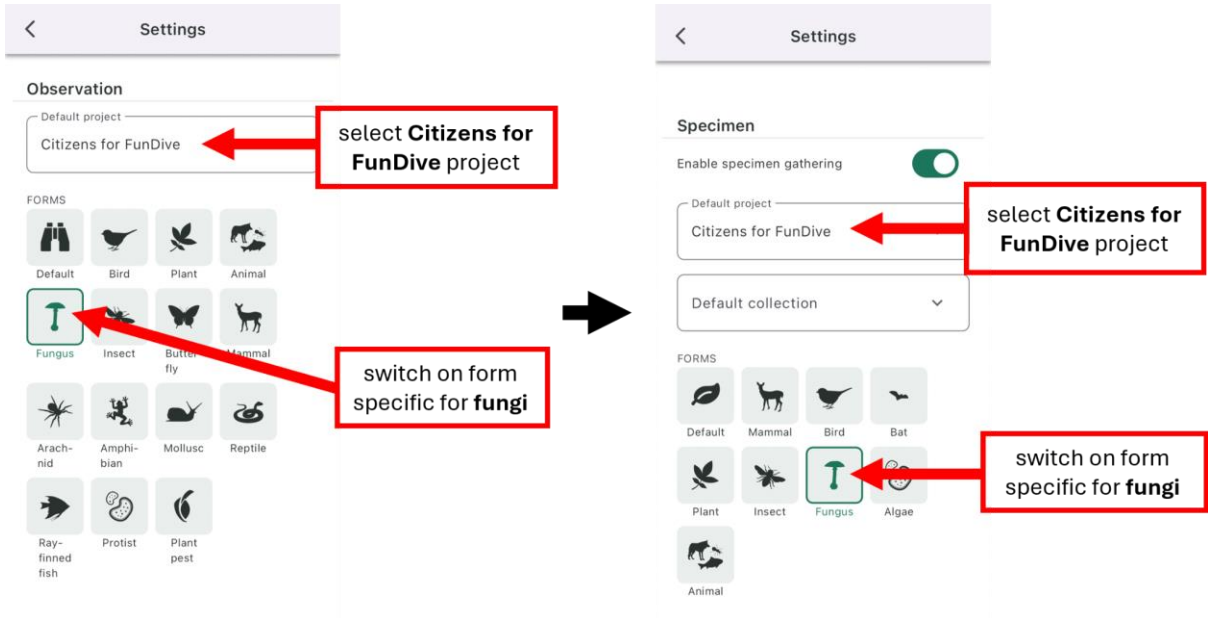


3. After the registration and activation of your account, open the PlutoF GO app again and sign in (using login and password from step 2).



4. Open and set up PlutoF GO settings. To record collected specimens and observations in FunDive chose the following settings:





*Complete documentation of PlutoF can be find here: <https://plutof.ut.ee/documentation>

- Remember to select: *Citizens for FunDive* as the default project both for **Observation** and **Specimen** sections. Now you are ready to record specimens and observations to FunDive!